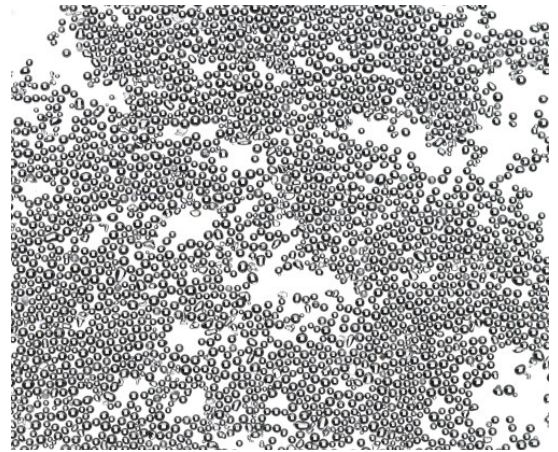


GLASS BEADS

(TECHNICAL DATA SHEET)

Glass Beads are a spherical abrasive manufactured from chemically inert, lead-free, soda-lime glass with no free silica. Glass Beads can be used on all metals regardless of hardness, leave no contaminants or residues on surfaces, smoothly blend away surface defects, improve corrosion resistance, and decrease fatigue by stress relieving machined and forged parts. Glass Beads produce clean, bright satin finishes, without dimensional change to parts, that are smoother than those produced by angular abrasives.



CHEMICAL COMPOSITION

SiO ₂	Na ₂ O	K ₂ O	CaO	MgO	Al ₂ O ₃	11,023
71 - 73%	13 - 15%	0.2 - 0.6%	8 - 10%	3 - 5%	0.5 - 2%	2205

PHYSICAL PROPERTIES

Hardness Mohs	6-7
Specific Gravity	2.4 - 2.6 g/cm ³
Bulk Density	1.5 g/cm ³
Shape	Spherical
Free Silica	NL
Free Iron	≤ 1%
Free Iron Color	Clear

STANDARDS

United States	AASHTO M247 (1981)
UK	GB/T24722-2009 BS6088 (1981)
Europe	EN1423 (1997) EN1424 (1998)
Korea	L2521
Japan	JIS R3301

GRITS AVAILABLE

STOCK SIZES#	U.S. Sieve	Size Inch	Size μm	%Round
A	20 - 30	0.0331 - 0.0234	850 - 600	65
B	30 - 40	0.0234 - 0.0165	600 - 425	70
C	40 - 60	0.0165 - 0.0098	425 - 250	70
D	50 - 70	0.0117 - 0.0083	300 - 212	80
AA	40 - 70	0.0165 - 0.0083	425 - 212	80
AB	50 - 80	0.0117 - 0.0070	300 - 180	80
AC	60 - 100	0.0098 - 0.0059	250 - 150	80
AD	70 - 140	0.0083 - 0.0041	212 - 106	90
AE	100 - 170	0.0059 - 0.0035	150 - 90	90
AG	140 - 270	0.0041 - 0.0021	106 - 53	90
AH	170 - 325	0.0035 - 0.0017	90 - 45	85
AI	MINUS270	MINUS0.002	MINUS53 OR FINER	85
INDA	50-140	0.0017-0.0041	300-106	85

APPLICATIONS

- **Surface Treatment:** Glass Beads are primarily used for cleaning and surface finishing, including polishing, deburring, sanitizing, descaling, coating removal, and surface blending. They can also be used to sanitize metal parts, such as medical implants and instruments as well as stainless steel fabrications for food- processing and pharmaceutical industries.
- **Shot Peening:** Glass Beads are used to create compressive stresses that improve the performance and service-life of metal aircraft engine blades, turbine rotors and components, gears, shafts, and similar products.
- **Road Marking:** Glass Beads create reflective lane markings that improve visibility and safety on roadways.

Important: The technical data herein is believed to be accurate. It is offered for your consideration, investigation and verification. Buyer assumes all risk of use, storage and handling of the product.